

HELEN TOWNSHIP

Each township has six files containing six sections in each, and one file containing all 36 sections.

Helen01to06.pdf
Helen07to12.pdf
Helen13to18.pdf
Helen19to24.pdf
Helen25to30.pdf
Helen31to36.pdf
HelenAll36.pdf

The points are listed starting with the point above the SE corner and continuing in a counter-clockwise rotation around the section. This normally begins with the East point, Northeast, then North, but may also include Witness Corners, and/or Meander Corners.

Definitions

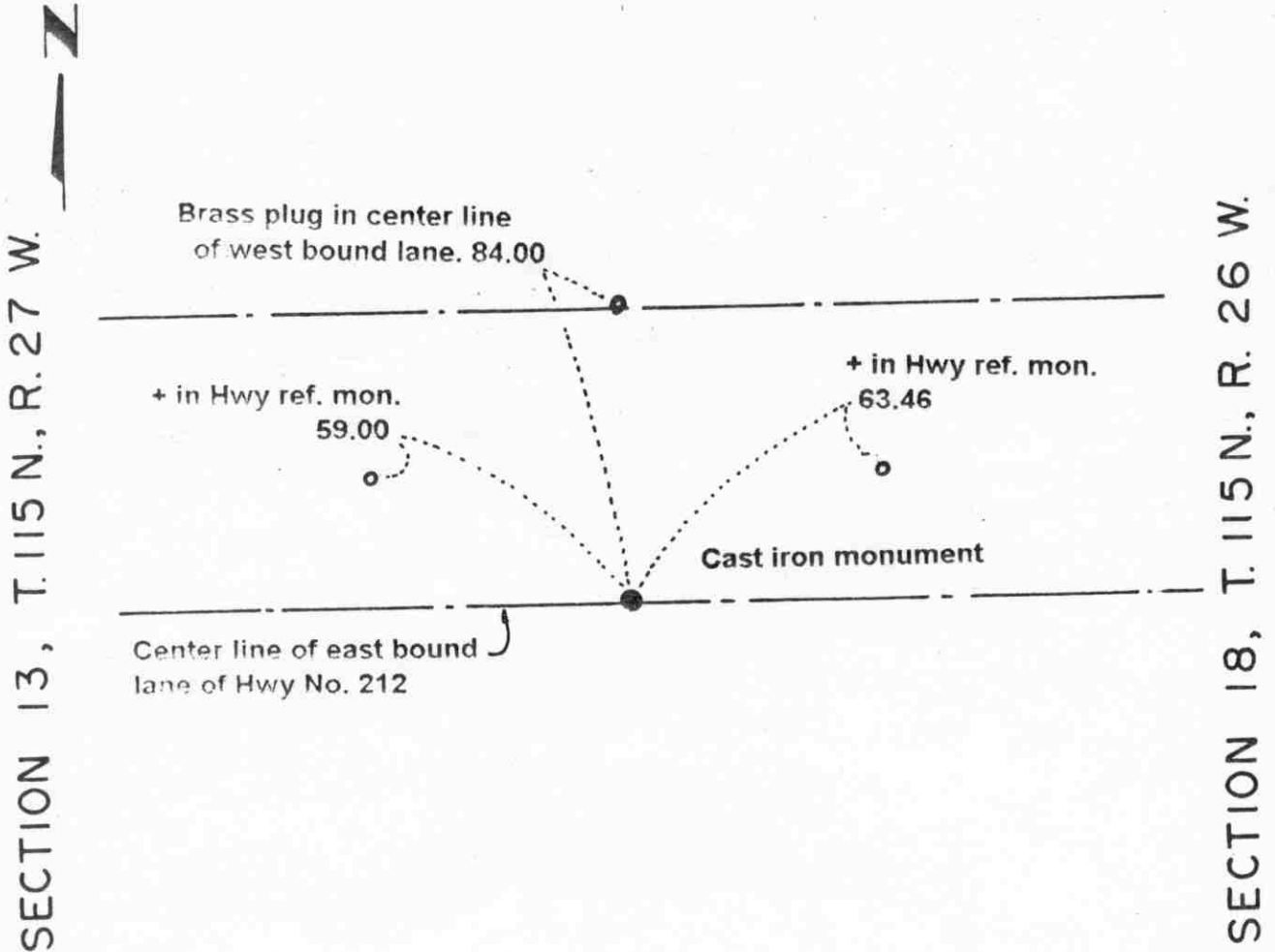
Witness Corner: A witness corner “stands in” when the true corner cannot be monumented or occupied because of difficult terrain or obstruction of the corner sight. The witness corner must be on the section line and is usually 5 or 10 chains away from the true corner.

Meander Corner: The intersection of a township, range, or section line and the banks of a navigable stream or meandering body of water.

Certificate of Location of Government Corner

EAST QUARTER corner, Section 13, Township 115 North, Range 27 West

SKETCH OF REFERENCE TIES (NO SCALE)



Statement of evidence relative to this corner location on sheet 2

I hereby certify that this document was prepared by me or under my direct supervision.

Willard Pellinen
 Willard Pellinen
 McLeod County Surveyor
 License No. 9626.

Date Oct. 9, 1995

**OFFICE OF THE COUNTY RECORDER
 MCLEOD COUNTY, MINNESOTA**

I hereby certify that this document was filed in this office at 9 o'clock A. M. on the 13th day of October 19 95.

Carmen Ostlie Mulder, County Recorder

By _____, Deputy.

Document No. 268582

Certificate of Location of Government Corner
East Quarter Corner, Section 13, Township 115 North, Range 27 West

1855. John Ryan of the General Land Office originally established this corner.

1971. The Carver County Surveyor found a PK nail in the approximate center line of the east bound lane of State Highway No. 212. In January, 1973, the State Highway Department excavated below the found PK nail and found their original brass plug directly below the PK nail. This brass plug marks the the location of the quarter corner according to 1925 highway plans.

January 5, 1973. A cast iron monument was set flush with the surface of the blacktop road and ties were taken.

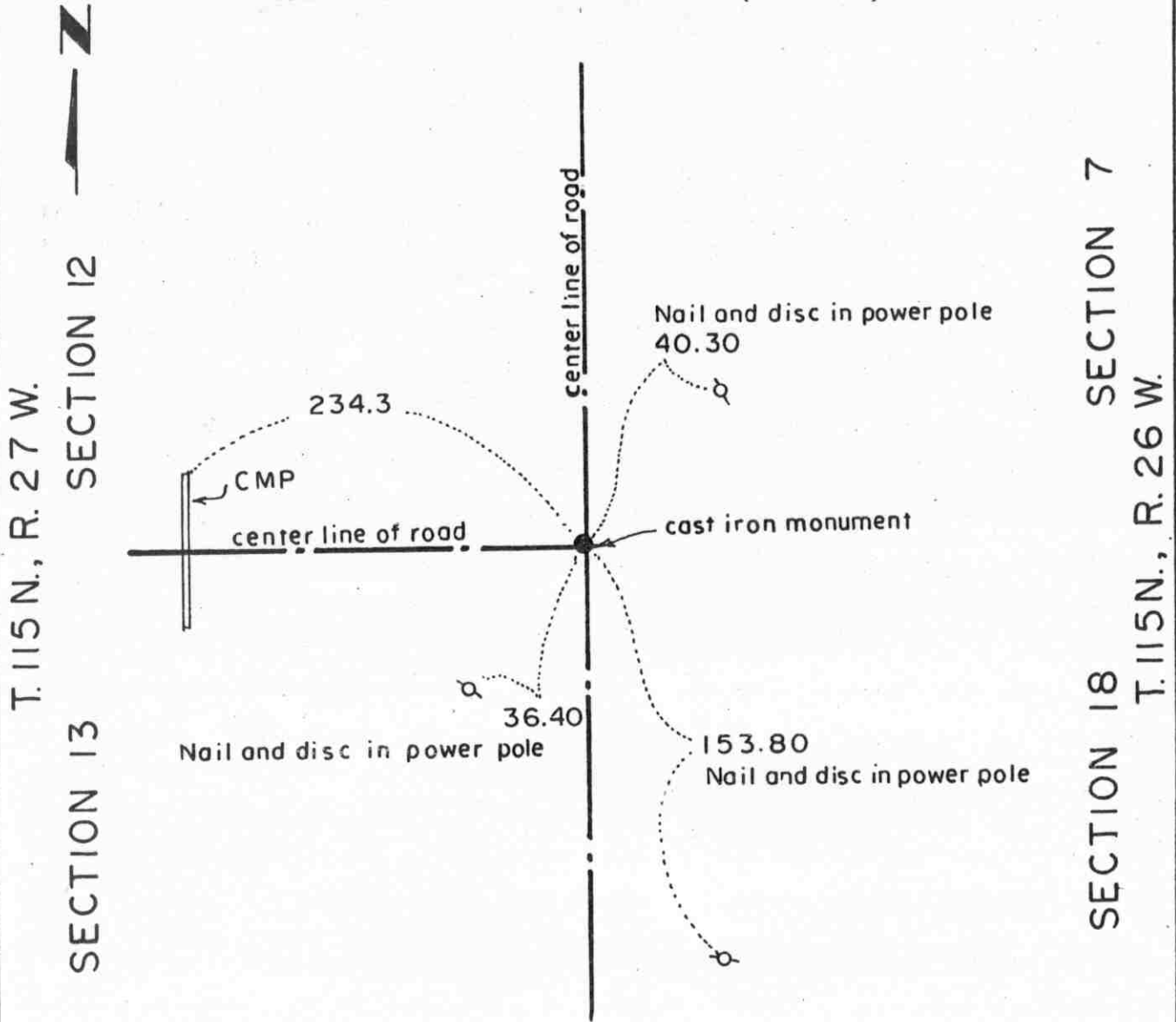
Dickman Knutson, McLeod County Surveyor, accepted this cast iron monument as marking the location of the government corner.

June, 1994. We checked the reference ties.

Certificate of Location of Government Corner

NORTHEAST corner, Section 13, Township 115 North, Range 27 West

SKETCH OF REFERENCE TIES (NO SCALE)



Statement of evidence relative to this corner location on sheet 2

I hereby certify that this document was prepared by me or under my direct supervision.

Willard Pellinen
 Willard Pellinen
 McLeod County Surveyor
 License No. 9626.

Date Jan. 10, 1995.

OFFICE OF THE COUNTY RECORDER
 MCLEOD COUNTY, MINNESOTA

I hereby certify that this document was filed in this office at 9 o'clock A. M. on the 13th day of January, 19 95.

Carmen Helie Mulder, County Recorder

By _____, Deputy.

Document No. 263703

Certificate of Location of Government Corner
Northeast Corner, Section 13, Township 115 North, Range 27 West

1855. John Ryan of the General Land Office originally established this corner. He set a post and marked 3 elms and an ash for bearing trees.

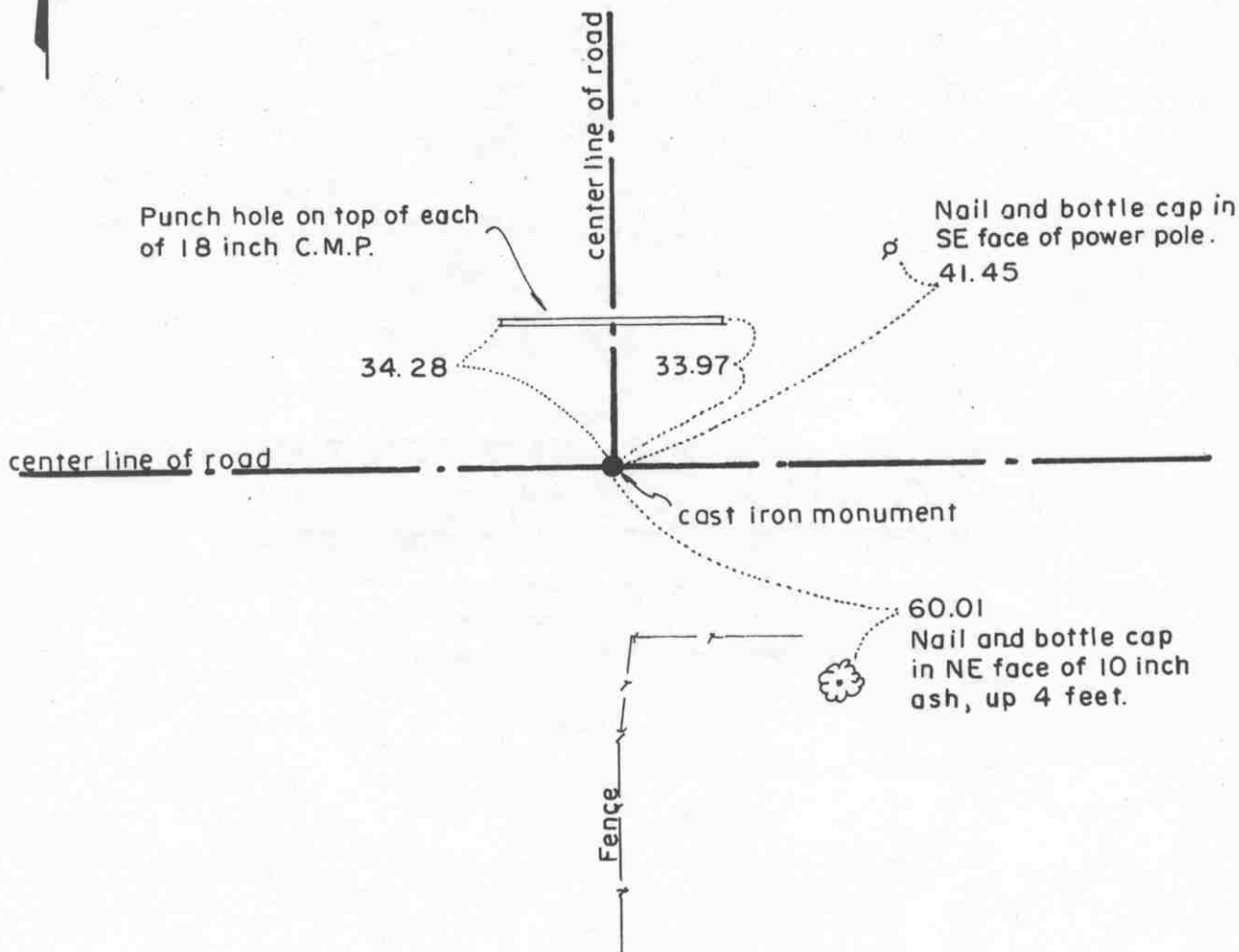
1971. The Carver County Surveyor found a limestone monument and set a cast iron monument. This location was accepted by Dickman Knutson, McLeod County Surveyor.

Certificate of Location of Government Corner

NORTH QUARTER corner, Section 13, Township 115 North, Range 27 West

SKETCH OF REFERENCE TIES (NO SCALE)

SECTION 12



SECTION 13

Statement of evidence relative to this corner location on sheet 2

I hereby certify that this document was prepared by me or under my direct supervision.

Willard Pellinen
 Willard Pellinen
 McLeod County Surveyor
 License No. 9626.

Date April 17, 1995

OFFICE OF THE COUNTY RECORDER
 MCLEOD COUNTY, MINNESOTA

I hereby certify that this document was filed in this office at 9 o'clock A. M. on the 24th day of Apr 19 95.

Carmen Estlie Mulder, County Recorder

By _____, Deputy.

Document No. 265304

Certificate of Location of Government Corner

North Quarter Corner, Section 13, Township 115 North, Range 27 West

1856. E. N. Darling of the General Land Office established this corner. He set a post in a dry marsh and marked an 8 inch oak and a 5 inch aspen for bearing trees.

1978. Dickman Knutson, county surveyor, excavated for the corner (John Tupa from Hutchinson with a backhoe). They found a 1 1/2 inch diameter iron pipe at the center line intersection of roads north, east and west. They found a 1 inch diameter iron pin below the iron pipe with a wood stake beside the iron pin. They took available reference ties. This intersection has been accepted as being the quarter corner. There was a fence running north approximately 1020 feet west of the found iron pipe. Deed distance is 1023 feet.

September 11, 1978. Knutson set a McLeod County cast iron monument and took reference ties.

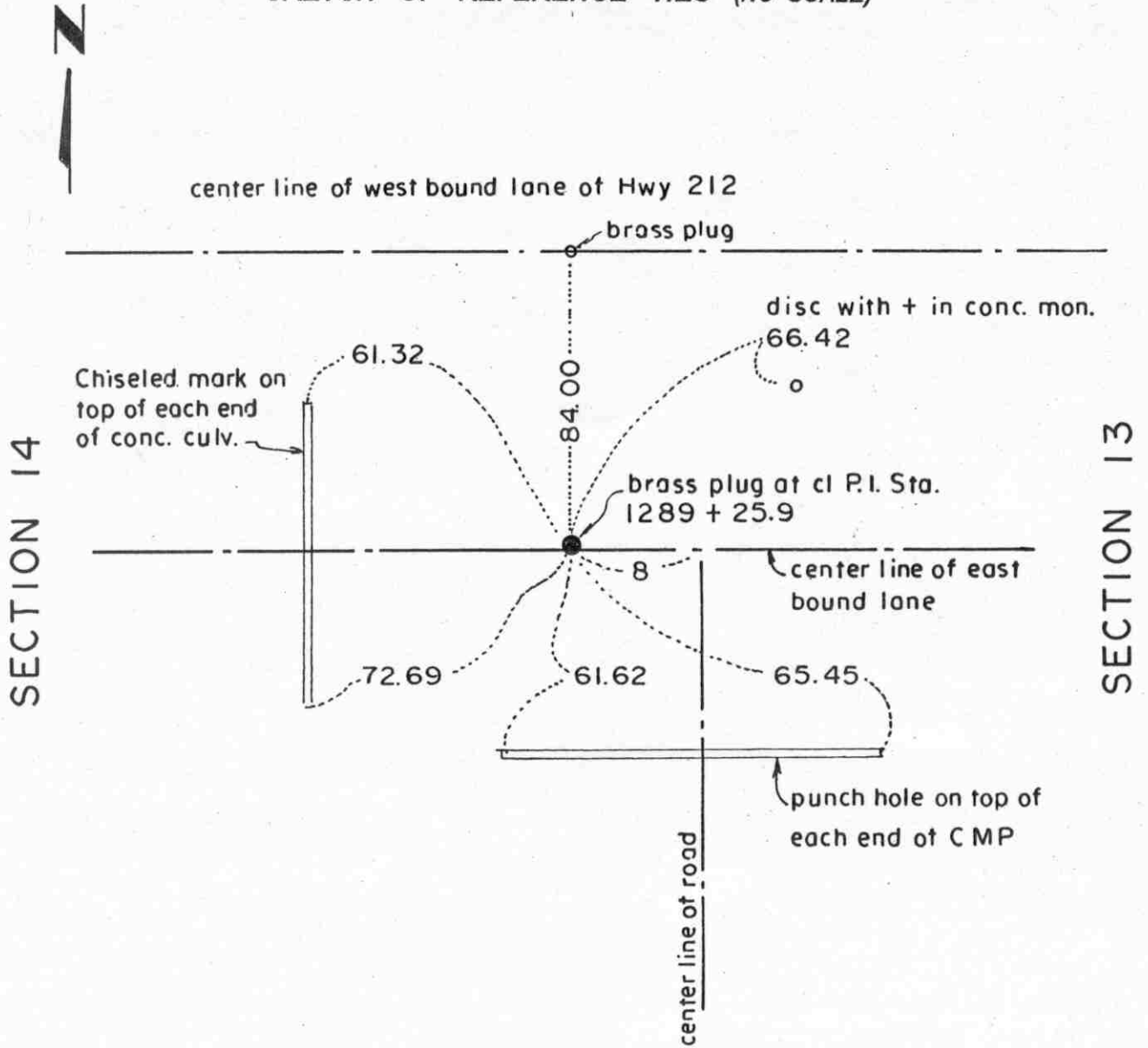
January, 1995. The monument set by Knutson is accepted as marking the correct location of the government corner. It fits long standing occupation lines (the roads) and it perpetuates the location of older monuments (the iron pipe, the iron pin and the wood stake).

February 3, 1995. We found the monument in good condition down 3 inches below the surface of the gravel road and took new available ties.

Certificate of Location of Government Corner

EAST QUARTER corner, Section 14, Township 115 North, Range 27 West

SKETCH OF REFERENCE TIES (NO SCALE)



Statement of evidence relative to this corner location on sheet 2

I hereby certify that this document was prepared by me or under my direct supervision.

Willard Pellinen
 Willard Pellinen
 McLeod County Surveyor
 License No. 9626.

Date Jan. 9, 1995

OFFICE OF THE COUNTY RECORDER
 MCLEOD COUNTY, MINNESOTA

I hereby certify that this document was filed in this office at 9 o'clock A. M. on the 13th day of January 19 95.

Carmen O'Brien Mulder, County Recorder

By _____, Deputy.

Document No. 263704

Certificate of Location of Government Corner
East Quarter Corner, Section 14, Township 115 North, Range 27 West

1856. E. N. Darling of the General Land Office established this corner. He set a post and marked a 12 inch and a 16 inch aspen for bearing trees.

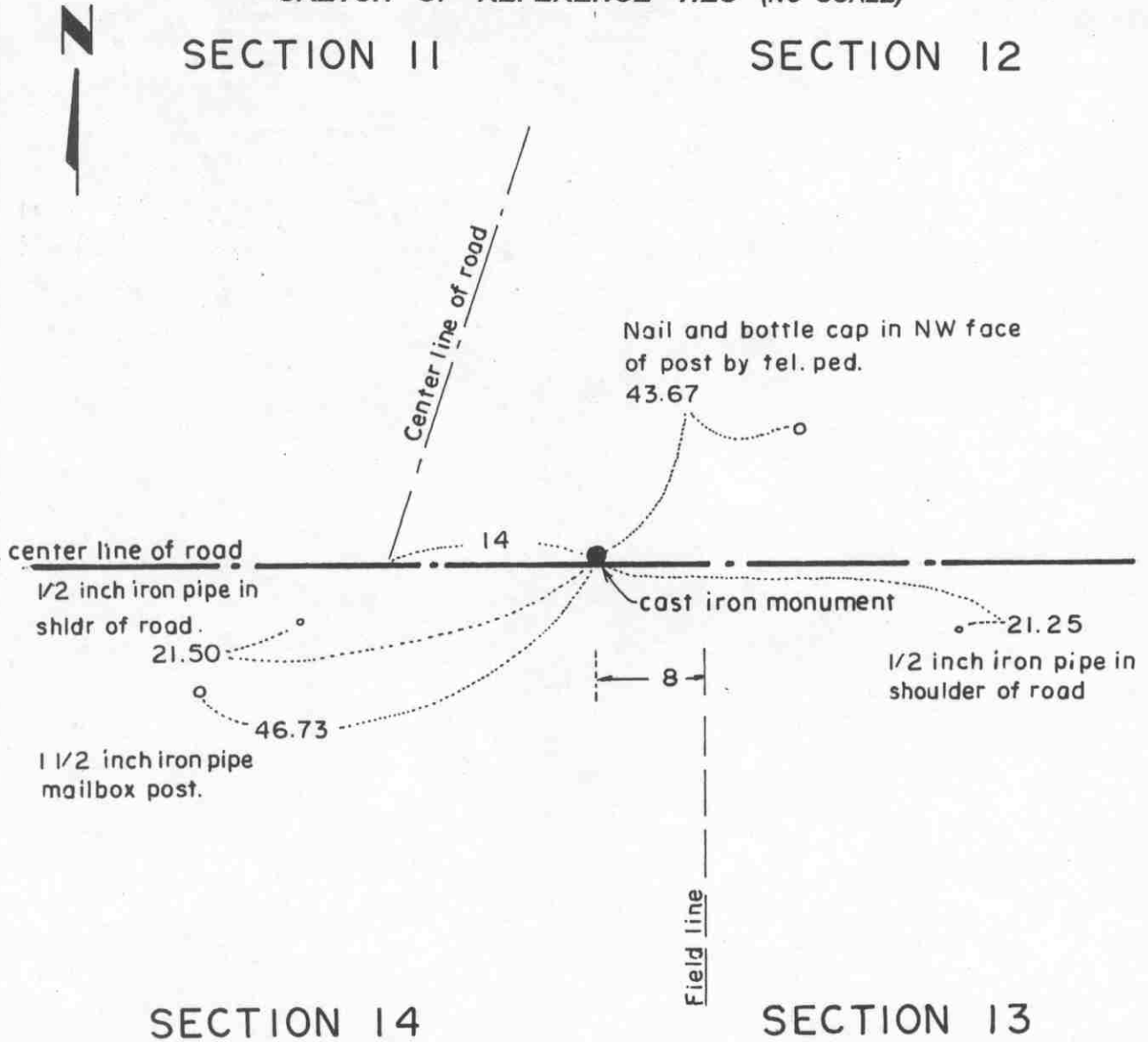
August 3, 1973. Dickman Knutson, county surveyor, found a brass plug at the center line P. I. Station 1289 + 25.9 of the east bound lane of U.S. Highway No. 212 and took available reference ties. Highway plans show the P.I. to be the quarter corner.

1994. We found the brass plug and checked the reference ties.

Certificate of Location of Government Corner

NORTHEAST corner, Section 14, Township 115 North, Range 27 West

SKETCH OF REFERENCE TIES (NO SCALE)



SECTION 14

SECTION 13

Statement of evidence relative to this corner location on sheet 2

I hereby certify that this document was prepared by me or under my direct supervision.

Willard Pellinen
 Willard Pellinen
 McLeod County Surveyor
 License No. 9626.

Date April 17, 1995

OFFICE OF THE COUNTY RECORDER
 MCLEOD COUNTY, MINNESOTA

I hereby certify that this document was filed in this office at 9 o'clock A. M. on the 24th day of Apr 19 95.

Carmen Dottie Mulder County Recorder

By _____, Deputy.

Document No. 265305

Certificate of Location of Government Corner
Northeast Corner, Section 14, Township 115 North, Range 27 West

1856. E. N. Darling of the General Land Office established this corner. He set a post and marked a 24 inch elm, a 12 inch elm, a 13 inch elm and a 12 inch linden for bearing trees.

May 19, 1976. Dickman Knutson, county surveyor, excavated for the corner (John Tupa from Hutchinson with a backhoe). Down 2 feet below the surface of the road they found a 1 inch diameter solid iron shaft, 3 feet long with a rotted wood stake along the west side of the shaft. They took reference ties and dug more but found no other evidence of the government corner.

Knutson measured 1093 1/2 feet south to the center line of the railroad. Railroad right of way map shows 1080 feet to the old center line and another 13 feet to the new center line, 1093 total.

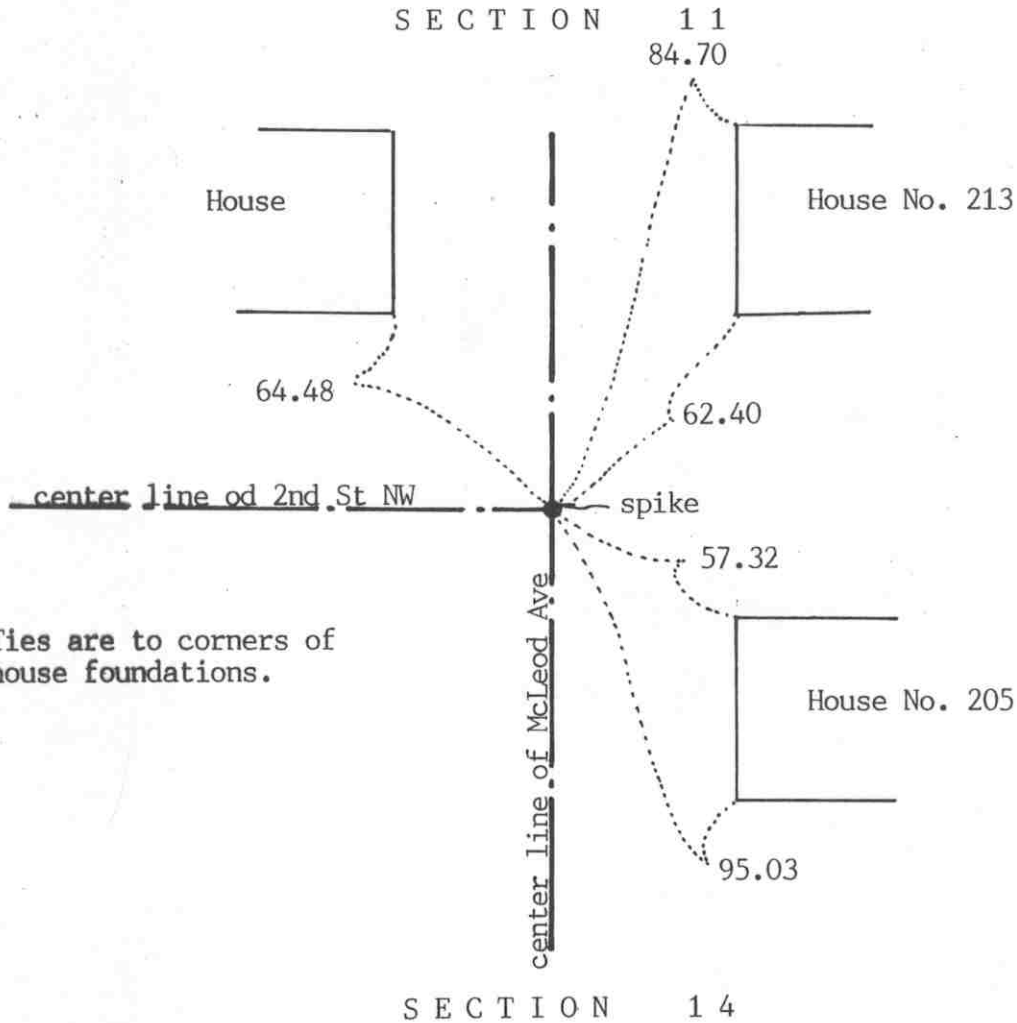
September 11, 1978. Knutson set a McLeod County cast iron monument at the corner and took additional ties.

February 3, 1995. We checked the reference ties.

Certificate of Location of Government Corner



SKETCH OF REFERENCE TIES (NO SCALE)



Ties are to corners of house foundations.

Statement of evidence relative to this corner location on sheet 2

I hereby certify that this document was prepared by me or under my direct supervision.

Willard Pellinen
Willard Pellinen
McLeod County Surveyor
License No. 9626

Date August 5, 1992

OFFICE OF THE COUNTY RECORDER
MCLEOD COUNTY, MINNESOTA.

I hereby certify that this document was filed in this office at 9 o'clock A.M. on the 20th day of Aug, 1992.

Carmen O'Brien, County Recorder

By _____, Deputy

Document No. 247334

Certificate of Location of Government Corner

1856. This corner was established by E. N. Darling of the General Land Office. He set a post and marked an aspen and a cherry tree for bearing trees.

August 3, 1973. McCombs Knutson Associates (Dickman Knutson, county surveyor) set an iron pipe at the corner using found monumentation in the plat of Plato. They took available reference ties.

September 11, 1978. Knutson replaced the iron pipe with a McLeod County cast iron monument.

May 24, 1990. We checked the reference ties to the corner, monument to be destroyed by road construction.

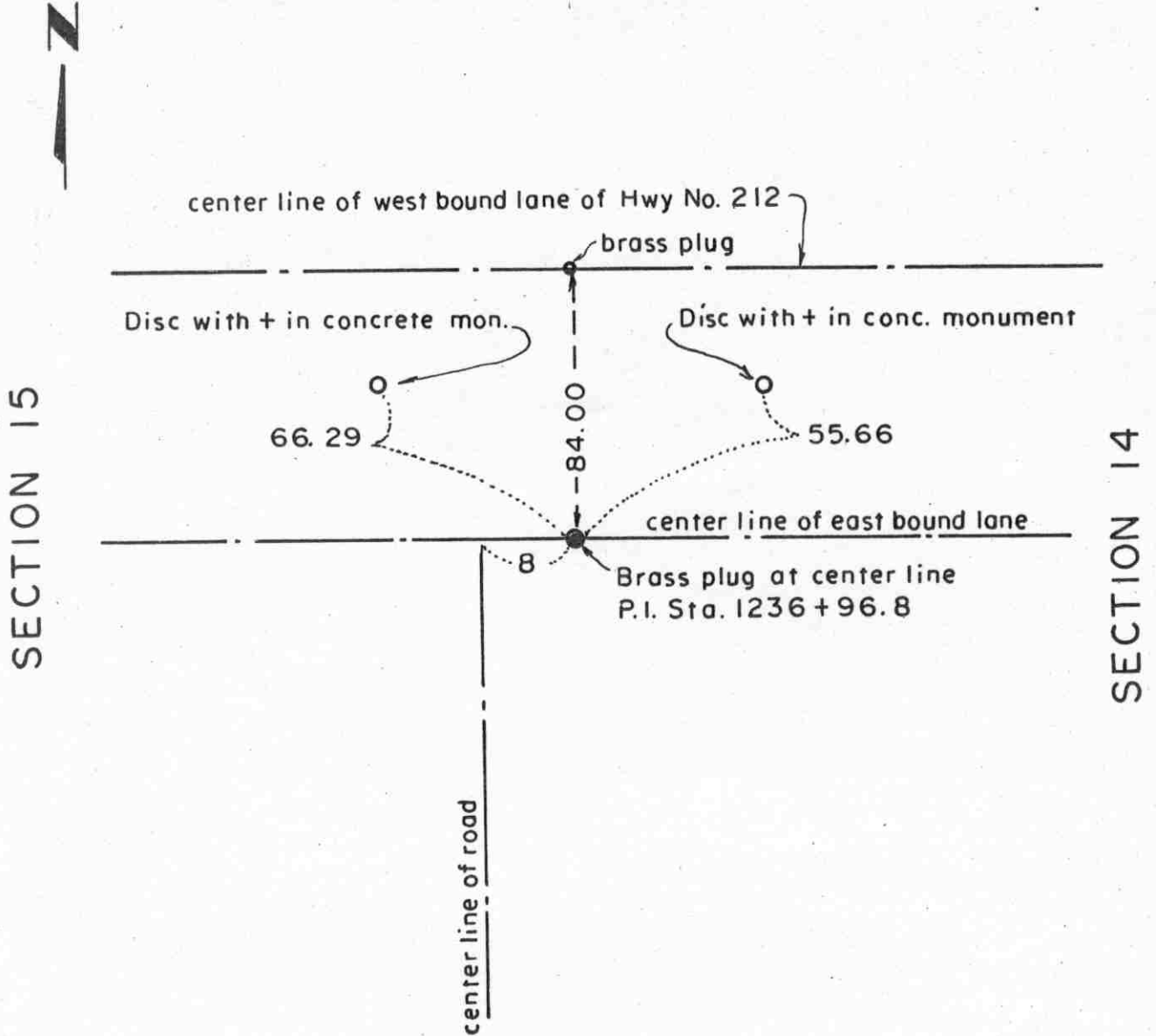
August 29, 1991. We set a spike at the corner using the old reference ties.

This was an obliterated corner whose location had been perpetuated by the monumentation in the plat of Plato.

Certificate of Location of Government Corner

EAST QUARTER corner, Section 15, Township 115 North, Range 27 West

SKETCH OF REFERENCE TIES (NO SCALE)



Statement of evidence relative to this corner location on sheet 2

I hereby certify that this document was prepared by me or under my direct supervision.

Willard Pellinen
 Willard Pellinen
 McLeod County Surveyor
 License No. 9626.

Date Jan 11, 1995

OFFICE OF THE COUNTY RECORDER
 MCLEOD COUNTY, MINNESOTA

I hereby certify that this document was filed in this office at 9 o'clock A. M. on the 13th day of January, 19 95.

Carmen Ostlie Mulder, County Recorder

By _____, Deputy.

Document No. 263705

Certificate of Location of Government Corner
East Quarter Corner, Section 15, Township 115 North, Range 27 West

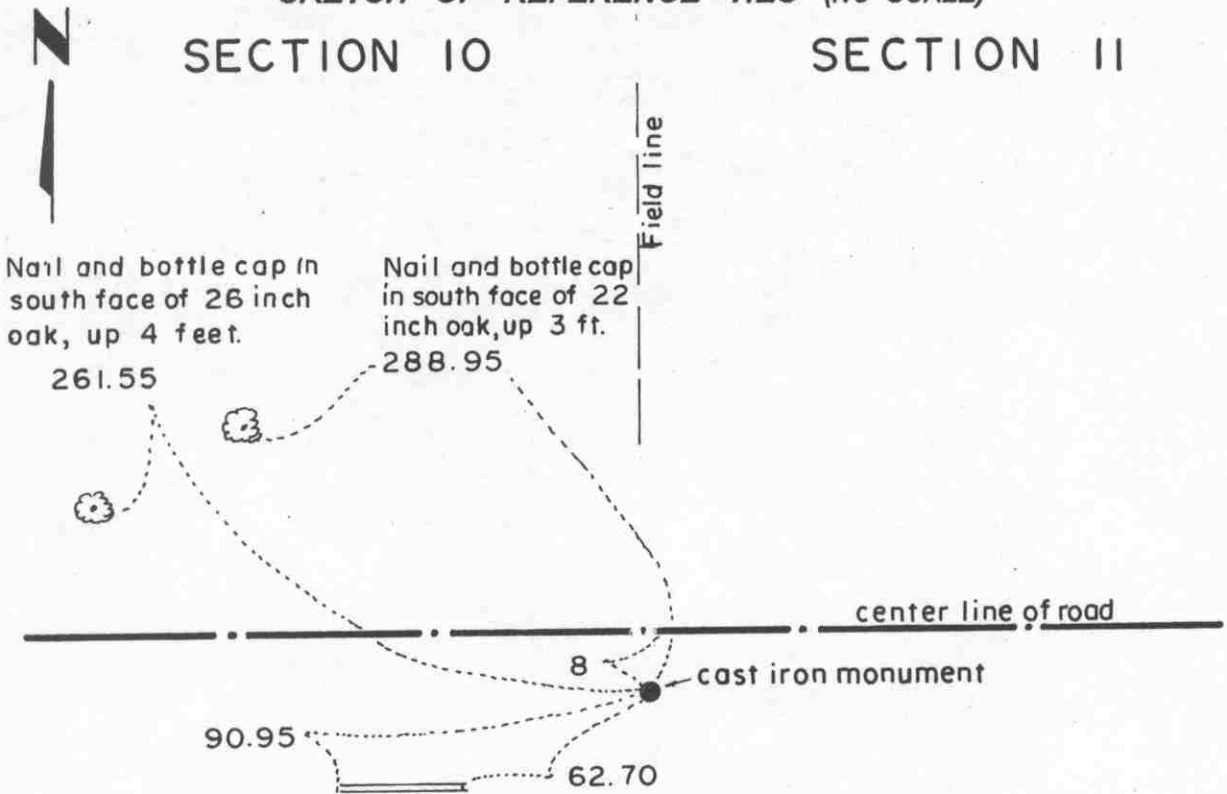
1856. E. N. Darling of the General Land Office established this corner. He set a post and marked a 12 inch aspen and a 16 inch aspen for bearing trees.

August 3, 1973. Dickman Knutson, county surveyor, found a brass plug in the center line of the east bound lane of Highway No. 212 at center line P.I. Station 1236 + 96.8. Highway right of way map shows the quarter corner to be at P.I. Station 1236 + 96.8.

Certificate of Location of Government Corner

NORTHEAST corner, Section 15, Township 115 North, Range 27 West

SKETCH OF REFERENCE TIES (NO SCALE)



Punch hole on top of each
end of 15 inch C.M.P., 30 feet long

SECTION 15

SECTION 14

Statement of evidence relative to this corner location on sheet 2

I hereby certify that this document was prepared by me or under my direct supervision.

Willard Pellinen
Willard Pellinen
McLeod County Surveyor
License No. 9626.

Date April 17, 1995

OFFICE OF THE COUNTY RECORDER
MCLEOD COUNTY, MINNESOTA

I hereby certify that this document was filed in this office at 9 o'clock A.M. on the 24th day of Apr 19 95.

Carmen Ottilie Mulder, County Recorder

By _____, Deputy.

Document No. 265306

Certificate of Location of Government Corner
Northeast Corner, Section 15, Township 115 North, Range 27 West

1856. E. N. Darling of the General Land Office established this corner. He set a post and marked a 4 inch and three 5 inch aspens for bearing trees.

November 22, 1971. Dickman Knutson, county surveyor, found an iron pipe with a McLeod County brass cap which was set by Carlisle Madson, Sr. former county surveyor. Knutson took available ties.

August 15, 1983. We found the brass capped monument 2 feet below the surface of the road and took new reference ties.

September, 17, 1984. We set a McLeod County cast iron monument over the old monument.

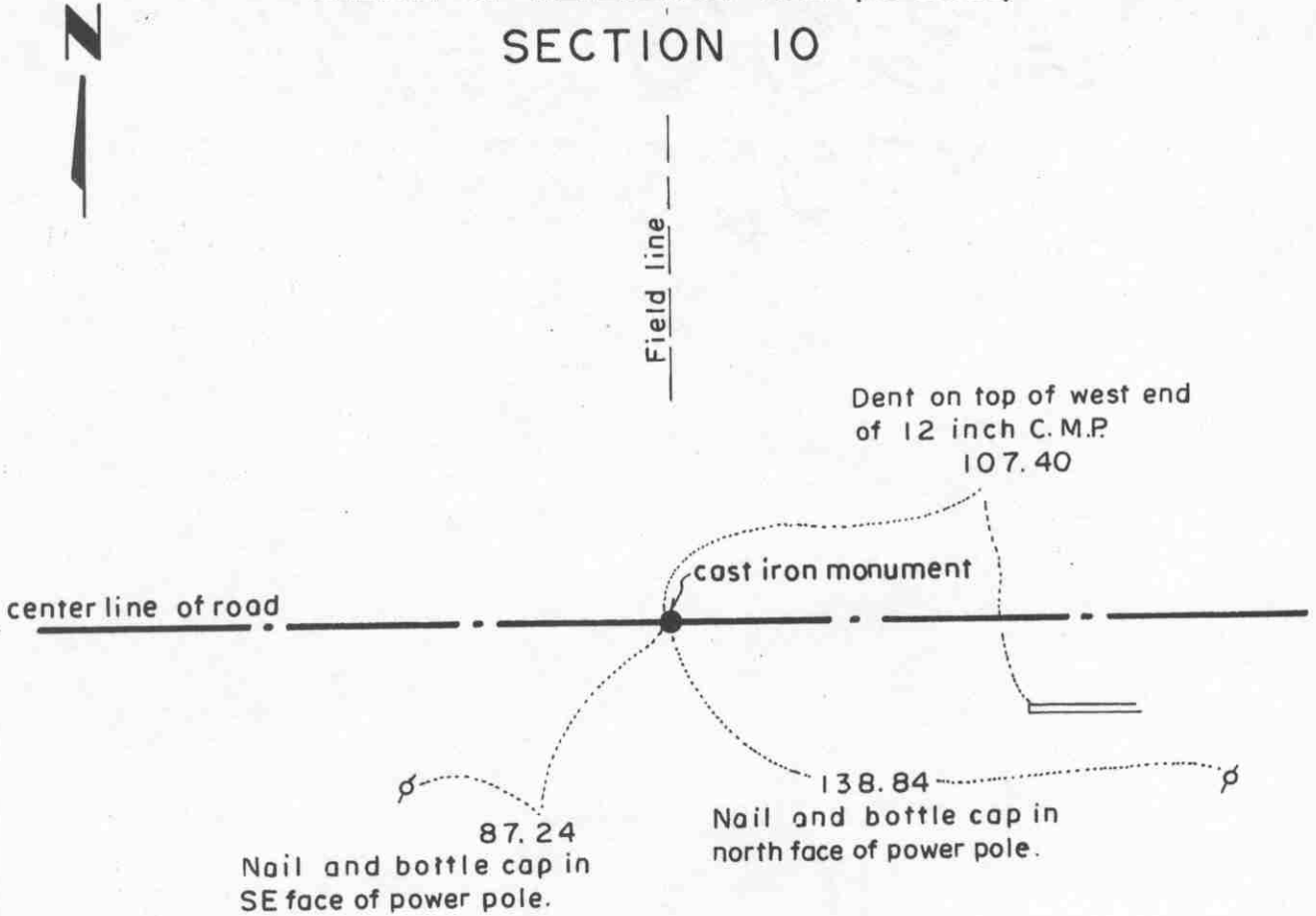
February 3, 1995. We checked the reference ties.

Certificate of Location of Government Corner

NORTH QUARTER corner, Section 15, Township 115 North, Range 27 West

SKETCH OF REFERENCE TIES (NO SCALE)

SECTION 10



SECTION 15

Statement of evidence relative to this corner location on sheet 2

I hereby certify that this document was prepared by me or under my direct supervision.

Willard Pellinen
Willard Pellinen
McLeod County Surveyor
License No. 9626.

Date April 17, 1995

OFFICE OF THE COUNTY RECORDER
MCLEOD COUNTY, MINNESOTA

I hereby certify that this document was filed in this office at 9 o'clock A. M. on the 24th day of Apr 19 95.

(Carmen) Pollock-Julder, County Recorder

By _____, Deputy.

Document No. 265307

Certificate of Location of Government Corner
North Quarter Corner, Section 15, Township 115 North, Range 27 West

1856. E. N. Darling of the General Land Office established this corner. He set a post and built mound of earth, dug trench as per instructions.

August 22, 1972. Mr. Ruben Dose, 70 + years old and had lived in the Southwest Quarter of Section 10 all his life, said the road has been regraded 3 times since he can remember and no corner was found. Field line running north on north-south quarter line of Section 10.

August 23, 1972. Dickman Knutson set a cast iron monument in the center line of the east-west road in line with the field line to the north.

July 1974. Knutson excavated for the corner (John Tupa from Hutchinson with a backhoe). They dug a hole 16 feet long, 6 feet wide down to original ground but found no evidence of the government corner.

1974. Knutson replaced the cast iron monument and took new reference ties. This is very nearly half way between the section corners.

January, 1995. There being no evidence to the contrary, the monument set by Knutson is accepted as marking the correct location of the quarter corner.

February 3, 1995. We checked the reference ties.

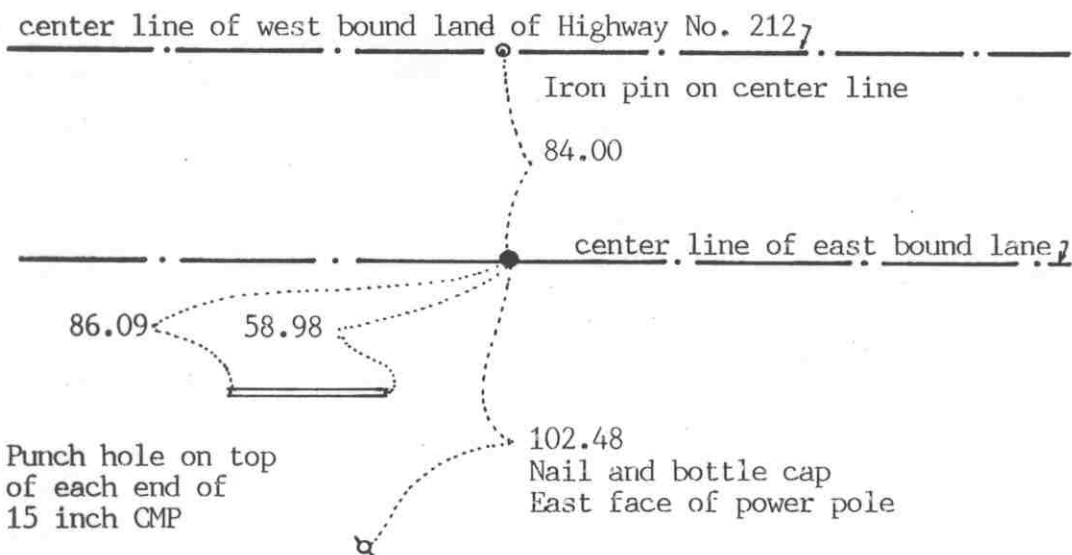
Certificate of Location of Government Corner



SKETCH OF REFERENCE TIES
(NO SCALE)

SECTION 16

SECTION 15



Statement of evidence relative to this corner location on sheet 2

I hereby certify that this document was prepared by me or under my direct supervision.

Willard Pellinen
Willard Pellinen
McLeod County Surveyor
License No. 9626

Date January 27, 1992

OFFICE OF THE COUNTY RECORDER
MCLEOD COUNTY, MINNESOTA.

I hereby certify that this document was filed in this office at 9 o'clock A.M. on the 30th day of January, 1992.

Carmen Ostlie, County Recorder
By _____, Deputy

Document No. 243109

EAST QUARTER corner, Section 16, Township 115 North, Range 27 West

Certificate of Location of Government Corner

1856. E.N. Darling of the General Land Office set a post in a marsh and marked 2 aspen for bearing trees.

State Highway No. 212 right of way plans show the corner to be on P.I. station 1184+13.4 on the center line of the east bound lane.

November 25, 1975. McCombs Knutson Associates (Dickman Knutson, county surveyor) found a spike at the corner using State Highway Department reference ties. Knutson took additional ties.

March 8, 1991. We re-set a spike at the corner using the 1975 ties.

Certificate of Location of Government Corner

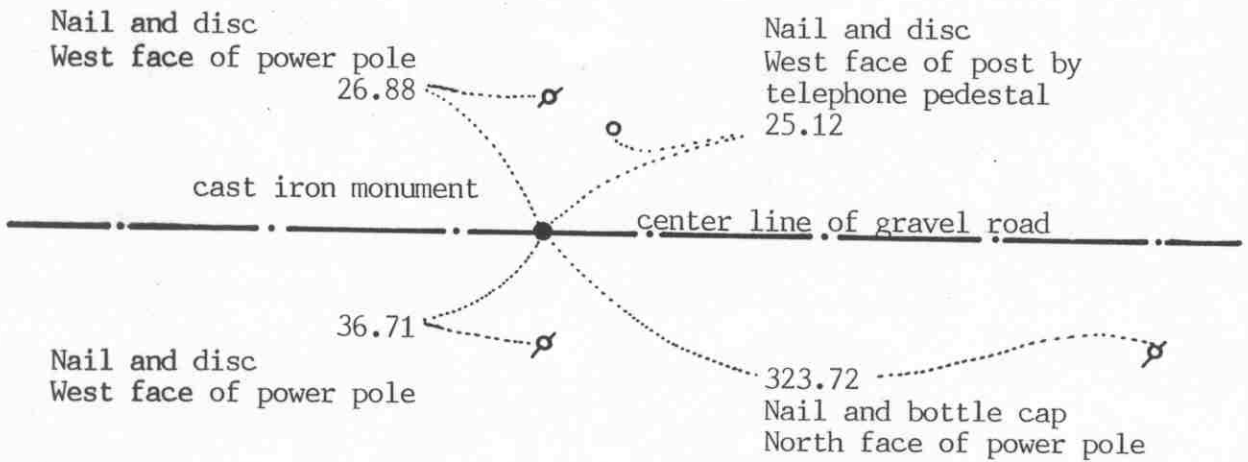
SKETCH OF REFERENCE TIES

(NO SCALE)



SECTION 9

SECTION 10



SECTION 16

SECTION 15

Statement of evidence relative to this corner on sheet 2

I hereby certify that this document was prepared by me or under my direct supervision.

Willard Pellinen
Willard Pellinen
McLeod County Surveyor
License No. 9626.

Date January 21, 1992

OFFICE OF THE COUNTY RECORDER
MCLEOD COUNTY, MINNESOTA.

I hereby certify that this document was filed in this office at 1 o'clock P.M. on the 27th day of January, 1992.

Sarman Ostlie, County Recorder.

By _____ Deputy.

Document No. 243055 NO FEE.

NORTHEAST corner, Section 16, Township 115 North, Range 27 West

Certificate of Location of Government Corner

This corner was originally established by E. N. Darling of the General Land Office in 1856. He set a post and marked 3 aspens and 1 cherry tree for bearing trees.

August 23, 1972. McCombs Knutson Associates (Dickman Knutson, county surveyor) dug for the corner and found a 1 inch diameter iron pin down 1 foot below the road surface and a stone and wood stake below the iron pin. This was in the center line of the east-west road in line with a field line to the south and a power pole line to the north.

January 7, 1974. Ernest Neske, 72 years old and had lived in the Southeast Quarter of Section all his life, said the iron pin found in 1972 is the section corner.

Knutson set a McLeod County cast iron monument at the corner and took reference ties.

February 20, 1991. We found the monument in good condition and checked the reference ties.

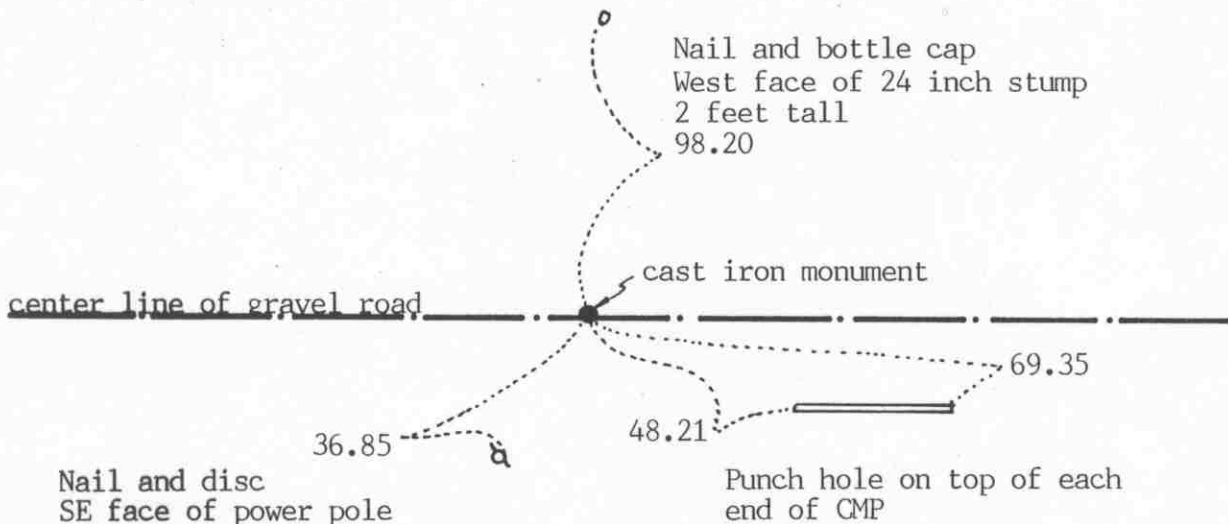
We accept the monument set by Knutson as marking the correct location of the section corner. It perpetuates the position of monuments that were found, which have perpetuated the location of the original corner.

Certificate of Location of Government Corner

SKETCH OF REFERENCE TIES

(NO SCALE)

SECTION 9



SECTION 16

Statement of evidence relative to this corner on sheet 2

I hereby certify that this document was prepared by me or under my direct supervision.

Willard Pellinen
Willard Pellinen
McLeod County Surveyor
License No. 9626.

Date January 21, 1992

OFFICE OF THE COUNTY RECORDER
MCLEOD COUNTY, MINNESOTA.

I hereby certify that this document was filed in this office at 1 o'clock P.M. on the 27th day of January, 1992.

Carman Ostlie, County Recorder.

By _____ Deputy.

Document No. 243056 NO FEE.

Certificate of Location of Government Corner

This corner was originally set by the government in 1856. E. N. Darling set a post and marked 2 aspen for bearing trees.

February, 1975. McCombs Knutson Associates (Dickman Knutson, county surveyor) measured the north line of Section 16 and set a temporary quarter corner on the center line of the east-west road over a "reading" by metal locator. There is a power pole running north $\frac{1}{2}$ way between this temporary corner and the northwest corner of Section 16 and a tree line running south approximately half way between the temporary quarter corner and the northeast corner of the section.

1975. Knutson dug for the corner and found an iron pin over a stone and wood stake. This was directly below the temporary corner.

September 11, 1978. Knutson set a McLeod County cast iron monument at the corner and took available ties.

February 20, 1991. We found the monument in good condition and checked the reference ties. This corner is 13.15 feet east of being half way between the section corners and $3\frac{1}{2}$ feet south of a straight line between the corners.

We accept the monument set by Knutson as the location of the quarter corner. It perpetuates the location of a found monument which may have perpetuated the location of the original corner. It fits an occupation line, the center line of the east-west road.

Certificate of Location of Government Corner

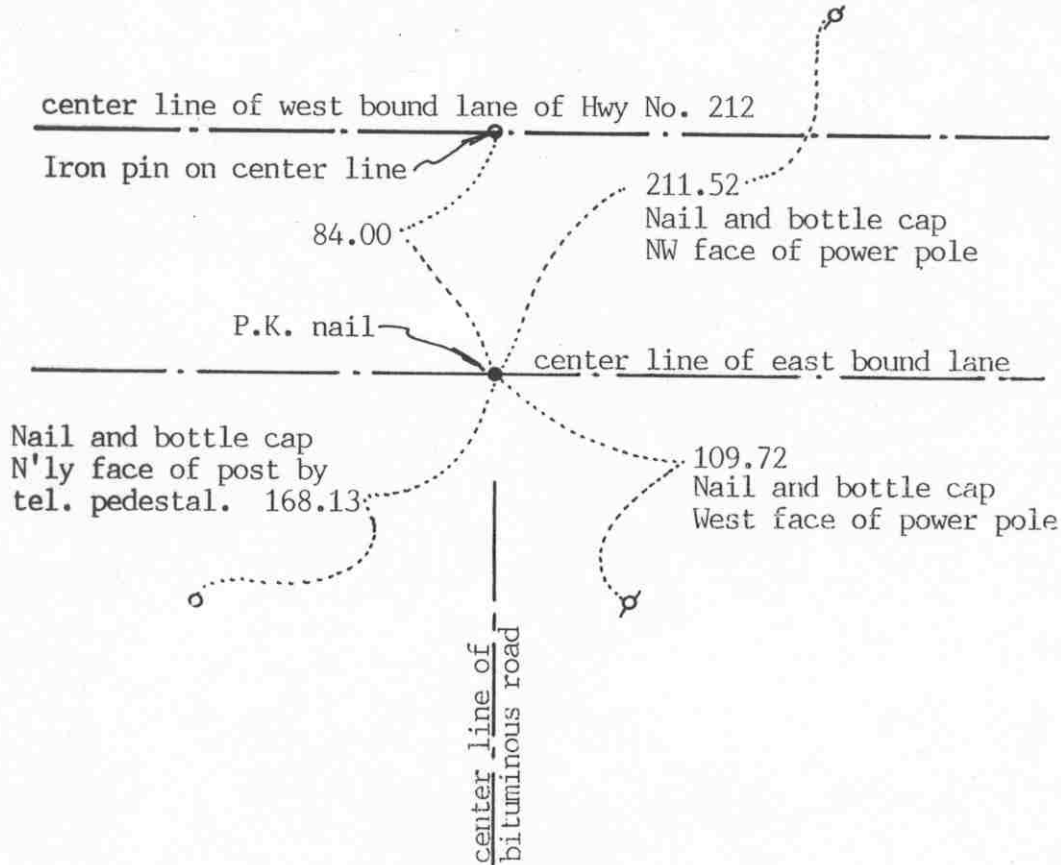
SKETCH OF REFERENCE TIES

(NO SCALE)



SECTION 17

SECTION 16



Statement of evidence relative to this corner location on sheet 2

I hereby certify that this document was prepared by me or under my direct supervision.

Willard Pellinen
Willard Pellinen
McLeod County Surveyor
License No. 9626

Date January 27, 1992

OFFICE OF THE COUNTY RECORDER
MCLEOD COUNTY, MINNESOTA.

I hereby certify that this document was filed in this office at 9 o'clock A.M. on the 30th day of January, 1992.

Armen Ostie, County Recorder

By _____, Deputy

Document No. 243110

Certificate of Location of Government Corner

1856. E. N. Darling of the General Land Office set a post at the corner and marked 2 aspens for bearing trees.

February 7, 1974. McCombs Knutson Associated (Dickman Knutson, county surveyor) found a spike at the corner, 84.00 feet south of a brass plug on the center line of the west bound lane of Highway No. 212. State Highway right of way plans show the corner to be on the center line of the east bound lane, 84.00 feet south of the center line of the west bound lane. This also agrees with ties received from Delbert Rieke, surveyor. Knutson took additional reference ties.

July 19, 1974. Knutson set a railroad spike at the corner.

March 8, 1991. We found the railroad spike had been destroyed by road construction. We re-set a P.K. nail at the corner using the reference ties.

Certificate of Location of Government Corner

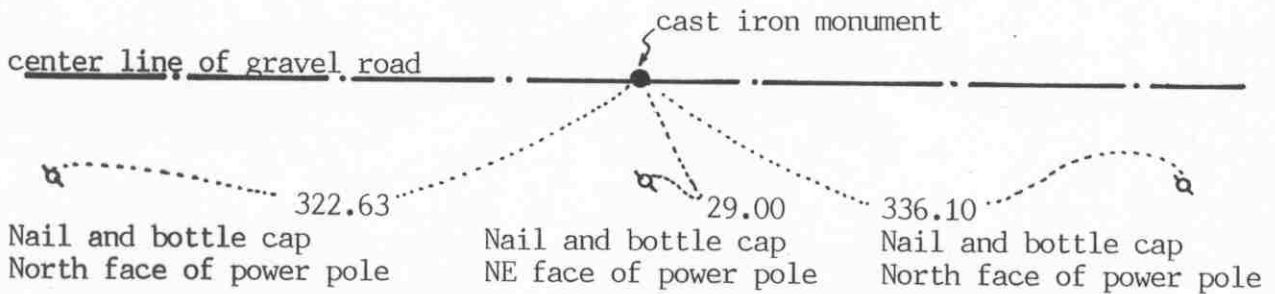
SKETCH OF REFERENCE TIES

(NO SCALE)



SECTION 8

SECTION 9



SECTION 17

SECTION 16

Statement of evidence relative to this corner on sheet 2

I hereby certify that this document was prepared by me or under my direct supervision.

Willard Pellinen
Willard Pellinen
McLeod County Surveyor
License No. 9626.

Date January 21, 1992

OFFICE OF THE COUNTY RECORDER
MCLEOD COUNTY, MINNESOTA.

I hereby certify that this document was filed in this office at 1 o'clock P.M. on the 27th day of January, 1992.

Carmen Ostlie, County Recorder.

By _____ Deputy.

Document No. 243057 NO FEE.

Certificate of Location of Government Corner

1856. The original government survey was completed by E.N.Darling. He set a post and marked 4 aspen for bearing trees.

19???. RCM (Delbert Rieke, surveyor) found an iron rod at the corner and tied it off.

March 16, 1966. Roy Hansen, surveyor, found an iron rod at the corner and used it in a survey in section 8.

January 26, 1976. McCombs Knutson Associates (Dickman Knutson, county surveyor) found an iron rod at the center line of the east-west road in line with a fence to the north, down 1 foot below the road surface. Knutson set a $\frac{1}{2}$ inch diameter iron pipe over the iron rod and took reference ties.

September 11, 1978. Knutson replaced the iron rod with a McLeod County cast iron monument.

February 20, 1991. We found the monument in good condition and checked the reference ties.

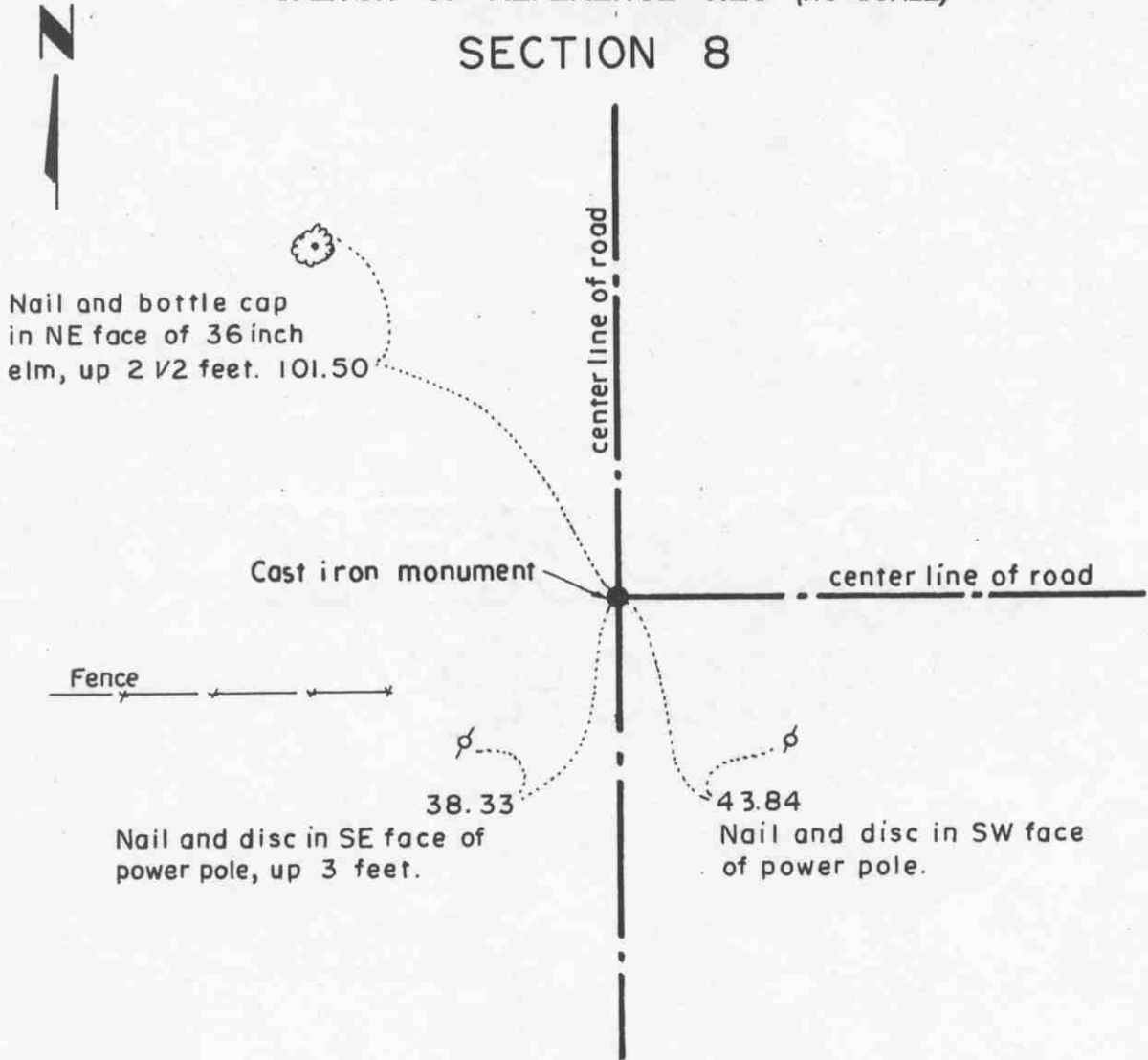
We accept the monument set by Knutson as the correct location of the section corner. It perpetuates the position of found monuments which may have perpetuated the position of the original corner. It also fits occupation lines, the center line of the road and the fence to the north.

Certificate of Location of Government Corner

NORTH QUARTER corner, Section 17, Township 115 North, Range 27 West

SKETCH OF REFERENCE TIES (NO SCALE)

SECTION 8



SECTION 17

Statement of evidence relative to this corner location on sheet 2

I hereby certify that this document was prepared by me or under my direct supervision.

Willard Pellinen
Willard Pellinen
McLeod County Surveyor
License No. 9626.

Date April 17, 1995

OFFICE OF THE COUNTY RECORDER
MCLEOD COUNTY, MINNESOTA

I hereby certify that this document was filed in this office at 9 o'clock A.M. on the 24th day of Apr 19 95.

Carmen Patricia Mulder, County Recorder

By _____, Deputy.

Document No. 265308

Certificate of Location of Government Corner
North Quarter Corner, Section 17, Township 115 North, Range 27 West

1856. E. N. Darling of the General Land Office established this corner. He set a post and marked a 6 inch aspen and a 7 inch aspen for bearing trees.

April, 1975. Rueben Dose, 71 years old and used to own the Northeast Quarter of Section 17 said the center line intersection of the roads is the corner. The fence to the west has been moved twice since he can remember so it might not be in the original location.

April 25, 1975. Dickman Knutson found a 1/2 inch re-rod at the intersection. This corner was used by Roy Hansen, surveyor, in a 1966 survey and accepted by the State Highway Department as the quarter corner.

September 5, 1975. Knutson replaced the re-rod with a McLeod County cast iron monument and took available reference ties.

The monument set by Knutson is accepted as marking the correct location of the government corner. It fits long standing occupation lines (the roads) and it perpetuates the location of an older monument (the re-rod).

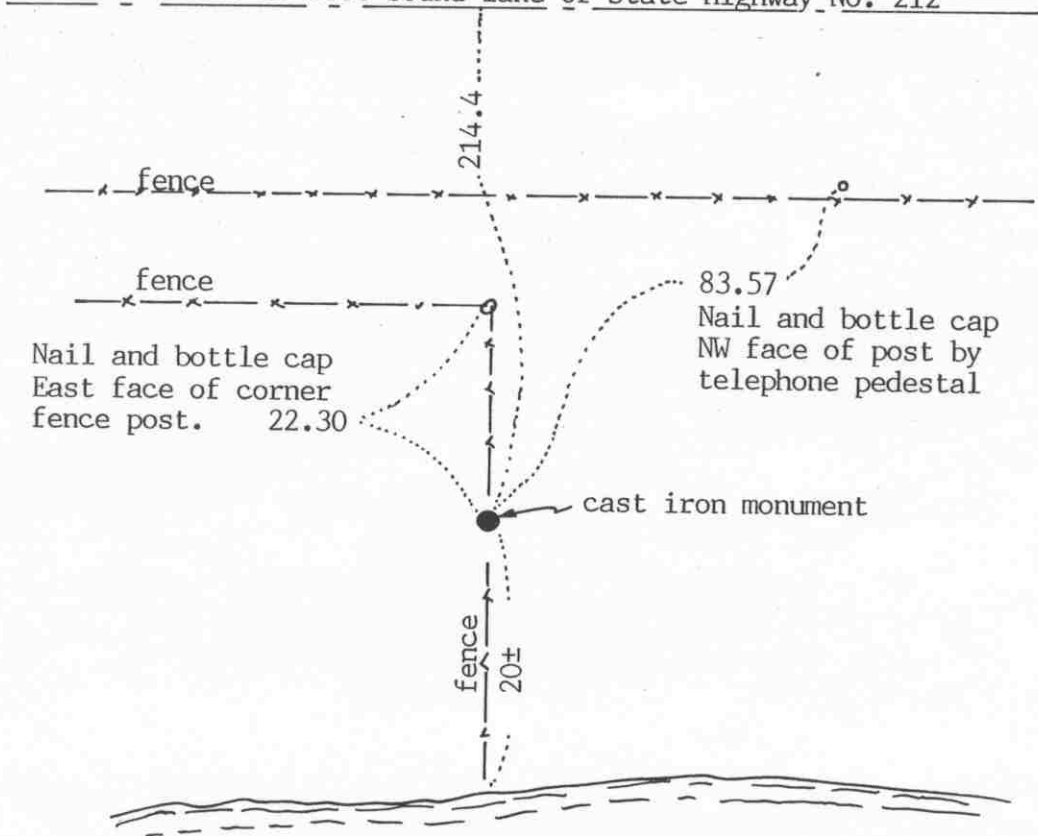
February 3, 1995. We checked the reference ties.

Certificate of Location of Government Corner

SKETCH OF REFERENCE TIES (NO SCALE)



Center line of west bound lane of State Highway No. 212



SECTION 18

SECTION 17

B U F F A L O C R E E K

Statement of evidence relative to this corner location on sheet 2

I hereby certify that this document was prepared by me or under my direct supervision.

Willard Pellinen
Willard Pellinen
McLeod County Surveyor
License No. 9626

Date Sept. 24, 1993

OFFICE OF THE COUNTY RECORDER
MCLEOD COUNTY, MINNESOTA.

I hereby certify that this document was filed in this office at 2 o'clock P.M. on the 5th day of Oct, 1993.

Carmin Estelle Mulder, County Recorder

By _____, Deputy

Document No. 255171

EAST QUARTER corner, Section 18, Township 115 North, Range 27 West

Certificate of Location of Government Corner

1856. This corner was established by E. N. Darling of the General Land Office. He set a post and marked 2 aspens for bearing trees.

State Highway right of way map shows an assumed corner along a north-south fence line 214.4 feet south of the west bound lane of the highway.

March 1972. Dickman Knutson, county surveyor, found an iron pin 214.4 feet of the as built center line of the west bound lane of the highway.

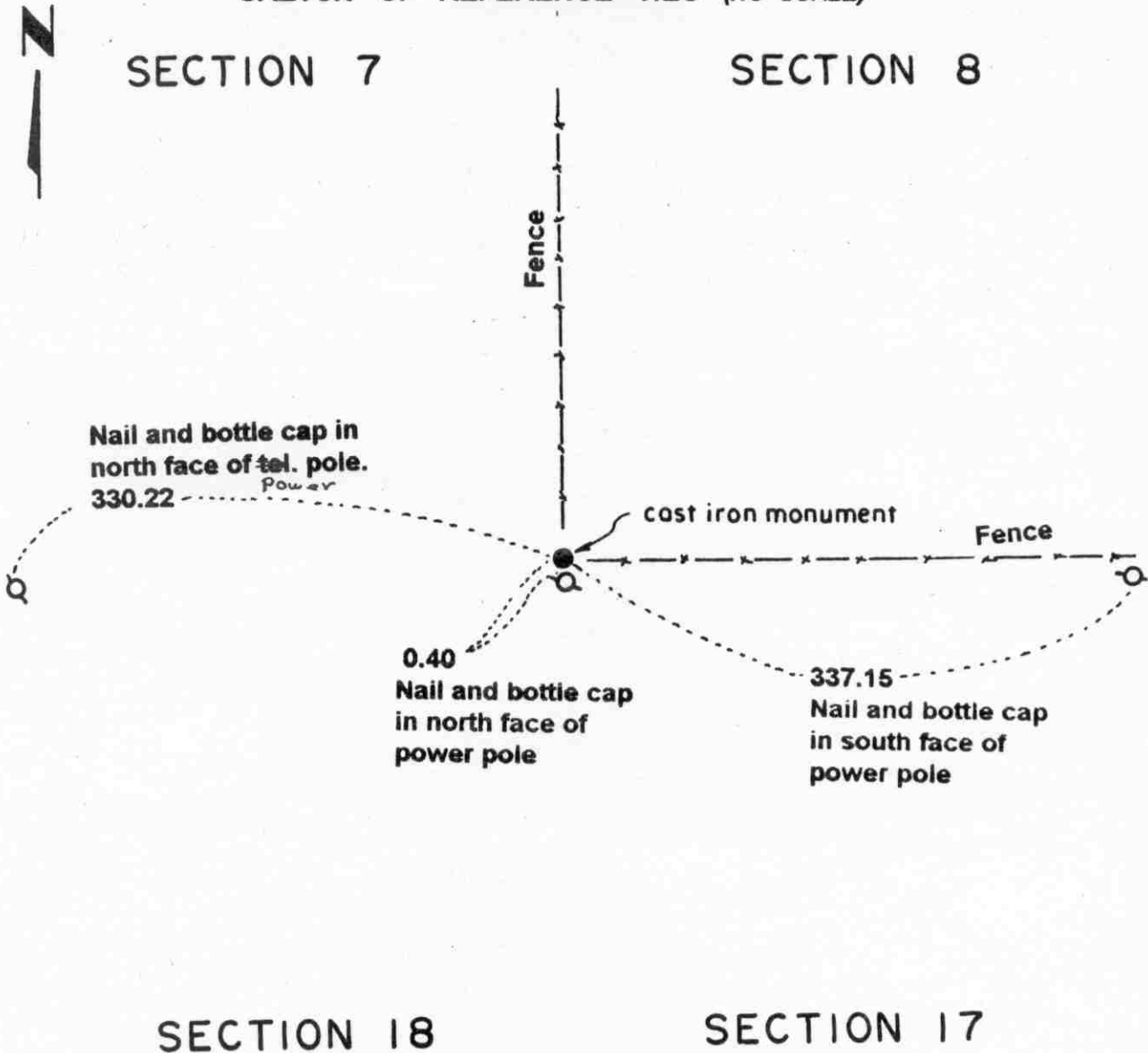
November 30, 1973. Knutson replaced the iron pin with a McLeod County cast iron monument and took available ties.

August 30, 1993. We found the monument in good condition along the north-south fence and took new reference ties.

Certificate of Location of Government Corner

NORTHEAST corner, Section 18, Township 115 North, Range 27 West

SKETCH OF REFERENCE TIES (NO SCALE)



Statement of evidence relative to this corner location on sheet 2

I hereby certify that this document was prepared by me or under my direct supervision.

Willard Pellinen
 Willard Pellinen
 McLeod County Surveyor
 License No. 9626.

Date Aug. 7, 1995

OFFICE OF THE COUNTY RECORDER
 MCLEOD COUNTY, MINNESOTA

I hereby certify that this document was filed in this office at 9 o'clock A.M. on the 07th day of August 19 95.

GARREN OSTLIE MALDER, MCLEOD COUNTY RECORDER, County Recorder

By Thyllis Sopotowick, Deputy.

Document No. 267424

***Certificate of Location of Government Corner
Northeast Corner, Section 18, Township 115 North, Range 27 West***

1856. E. N. Darling of the General Land Office established this corner. He set a post and marked 4 aspens for bearing trees.

November 5, 1971. Dickman Knutson, county surveyor, searched for the corner at a fence intersection which has been accepted by adjoining land owners as the section corner. He found no evidence of the government corner. The state highway department crew also had dug here but found nothing. Fences run north and east.

Knutson set a McLeod County cast iron monument at the fence intersection and took available ties.

There being no evidence to the contrary, the monument set by Knutson is accepted as marking the correct location of the government corner.

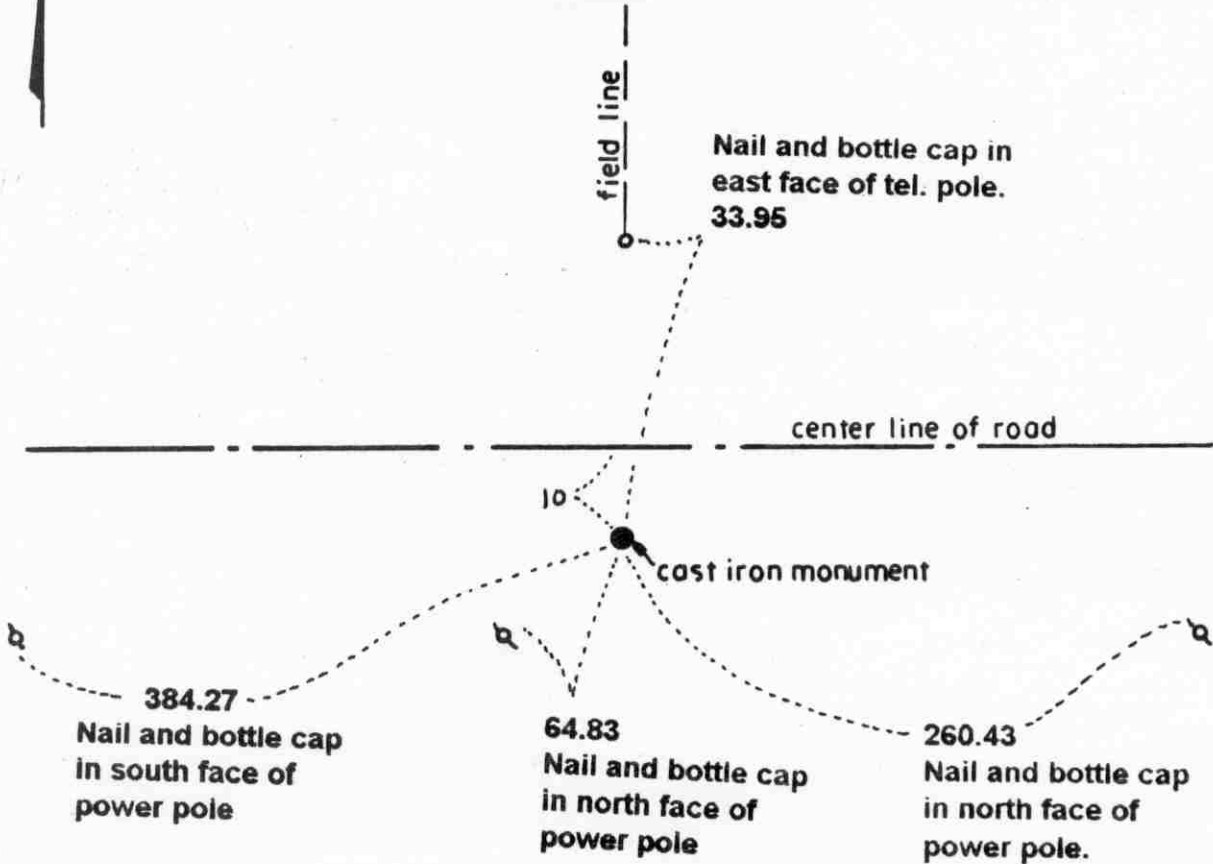
March 29, 1995. We checked the reference ties.

Certificate of Location of Government Corner

NORTH QUARTER corner, Section 18, Township 115 North, Range 27 West

SKETCH OF REFERENCE TIES (NO SCALE)

SECTION 7



SECTION 18

Statement of evidence relative to this corner location on sheet 2

I hereby certify that this document was prepared by me or under my direct supervision.

Willard Pellinen
Willard Pellinen
McLeod County Surveyor
License No. 9626.

Date Aug. 7, 1995

OFFICE OF THE COUNTY RECORDER
MCLEOD COUNTY, MINNESOTA

I hereby certify that this document was filed in this office at 9 o'clock A. M. on the 8th day of August 19 95.

CARMEN ORTUE MALDEF, MCLEOD COUNTY RECORDER, County Recorder

By Phyllis Jopkowiak, Deputy.

Document No. 267425

Certificate of Location of Government Corner
North Quarter Corner, Section 18, Township 115 North, Range 27 West

1856. E.N. Darling of the General Land Office established this corner. He set a post and marked 2 aspens for bearing trees.

1971. Dickman Knutson, county surveyor, found a 1 inch diameter iron pipe set by Delbert Rieke, surveyor. This was set on a proration of 1899 distances by E. L. Higgins, county surveyor.

November 5, 1971. Knutson set a cast iron monument over the iron pipe and took available ties.

March 29, 1995. We checked the reference ties to the monument.

Certificate of Location of Government Corner

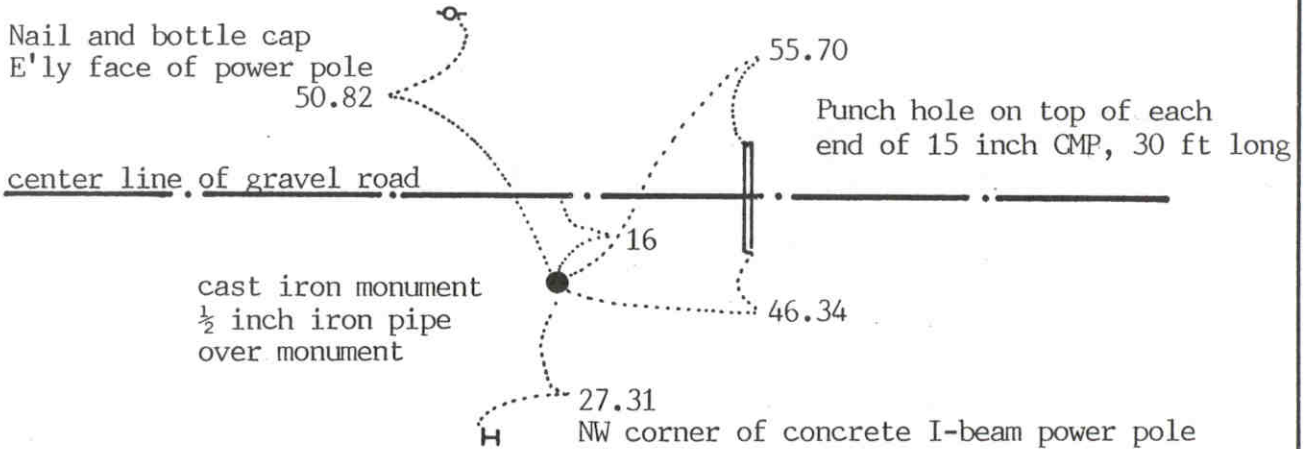


SKETCH OF REFERENCE TIES

(NO SCALE)

SECTION 12
T 115 R 28

SECTION 7
T 115 R 27



SECTION 13
T 115 R 28

SECTION 18
T 115 R 27

Statement of evidence relative to this corner location on sheet 2

I hereby certify that this document was prepared by me or under my direct supervision.

Willard Pellinen

Willard Pellinen
McLeod County Surveyor
License No. 9626

Date October 14, 1992

OFFICE OF THE COUNTY RECORDER
MCLEOD COUNTY, MINNESOTA.

I hereby certify that this document was filed in this office at 9 o'clock A.M. on the 19th day of October, 1992.

Carman Estelle Muddy County Recorder

By _____, Deputy

248332

Document No. _____

NORTHEAST corner, Section 13, Township 115 North, Range 28 West

Certificate of Location of Government Corner

1855. John Ryan of the General Land Office set a post, deposited charcoal, dug pits and trench, built mound and planted osage orange seeds at the corners of the mound.

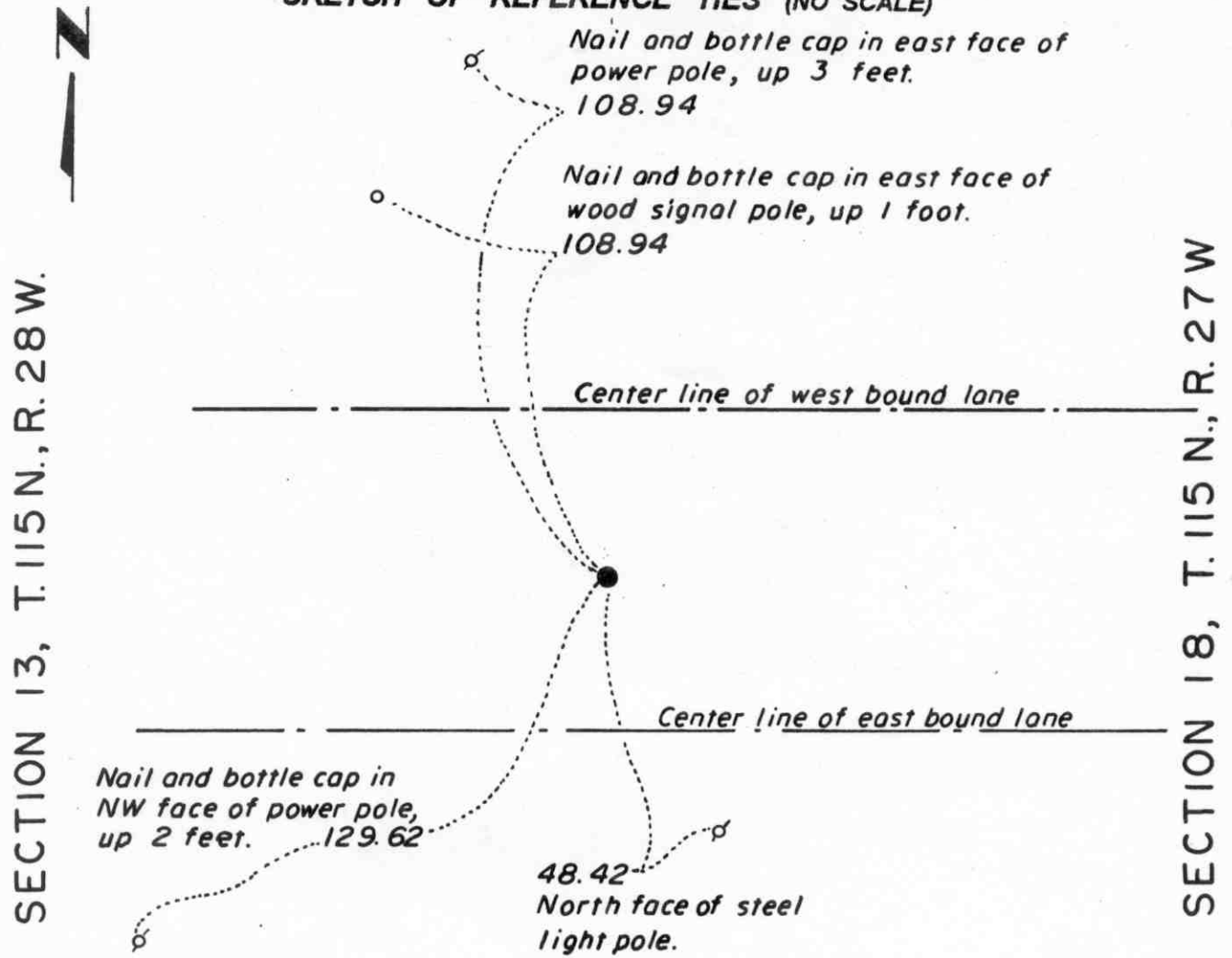
1970. McCombs Knutson Associates (Dickman Knutson, county surveyor) set a McLeod County cast iron monument in place of a found iron pin. The distance to the east quarter corner of Section 13 is very nearly the same as shown in the newer maps of the City of Glencoe. The original plat of Glencoe shows a distance of about 8 feet shorter.

April 13, 1992. No old ties remained and we found the monument down 2 feet below the ground surface. We retied the monument and set a $\frac{1}{2}$ inch by 14 inch iron pipe over the monument flush with the ground.

Certificate of Location of Government Corner

East Quarter corner, Section 13, Township 115 North, Range 28 West

SKETCH OF REFERENCE TIES (NO SCALE)



Statement of evidence relative to this corner location on sheet 2

I hereby certify that this document was prepared by me or under my direct supervision.

Willard Pellinen
 Willard Pellinen
 McLeod County Surveyor
 License No. 9626.

Date Dec. 13, 1995

**OFFICE OF THE COUNTY RECORDER
 MCLEOD COUNTY, MINNESOTA**

I hereby certify that this document was filed in this office at 9 o'clock A. M. on the 9th day of January 19 96.

Carmen Estlie Mudd, County Recorder

By Charles Engelmann, Deputy.

Document No. 270185

Certificate of Location of Government Corner

East Quarter Corner, Section 13, Township 115 North, Range 28 West

1855. John Ryan of the General Land Office established this corner. He set a post, deposited charcoal, dug pits and trench, built mound and planted osage orange seeds at the corners of the mound.

December, 1968. Dickman Knutson, county surveyor, found an iron pin and replaced it with a cast iron monument.

June 21, 1982. We found a Minnesota Highway Department brass top monument at the corner. Highway Department had reset the corner after highway construction. We took new reference ties.

January, 1995. We checked the reference ties to the corner.